

FOR LEASE



 TAKE VIRTUAL TOUR

±4,250 SF CREATIVE COMMERCIAL BUILDING AVAILABLE WITH PARKING

925 HARRISON ST, SAN FRANCISCO, CA 94103

 **Kidder
Mathews**



PROPERTY HIGHLIGHTS

- Creative open plan ±4,250 SF total space
- Sandblasted concrete and wood interior
- Polished concrete and european white oak floors
- Two (2) private offices
- One (1) conference room
- Three (3) ADA Restrooms
- Two (2) Kitchenettes
- Two (2) HVAC Units (one per floor)
- All windows operable and skylights
- Tremendous natural light
- Exclusive parking or outdoor space

±2,700
GROUND FLOOR SF

±1,550
2ND FLOOR SF

\$10,000
MO, IG

SALI
ZONING

GROUND FLOOR PLAN

±2,700 SF
AVAILABLE



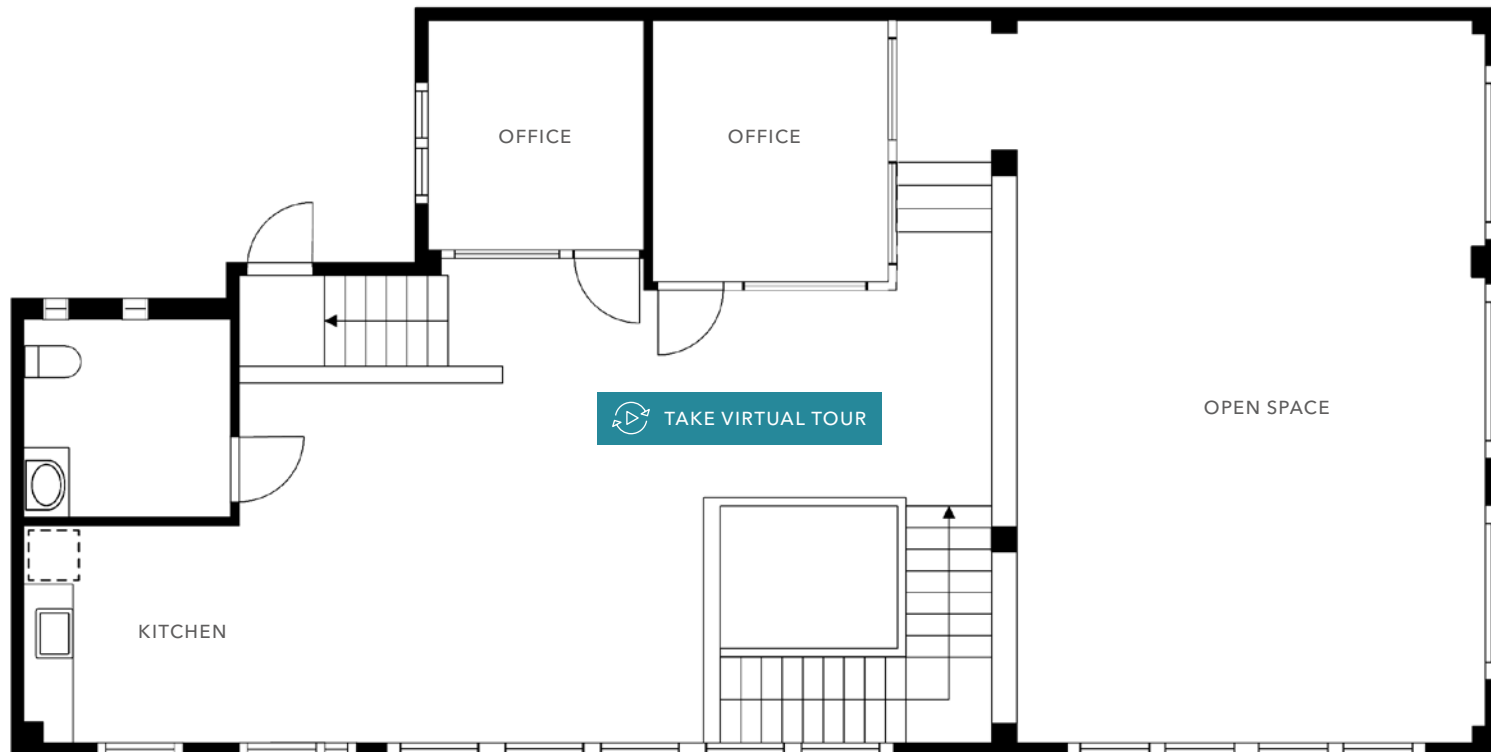
FLOOR PLAN NOT TO SCALE

GROUND FLOOR



SECOND FLOOR PLAN

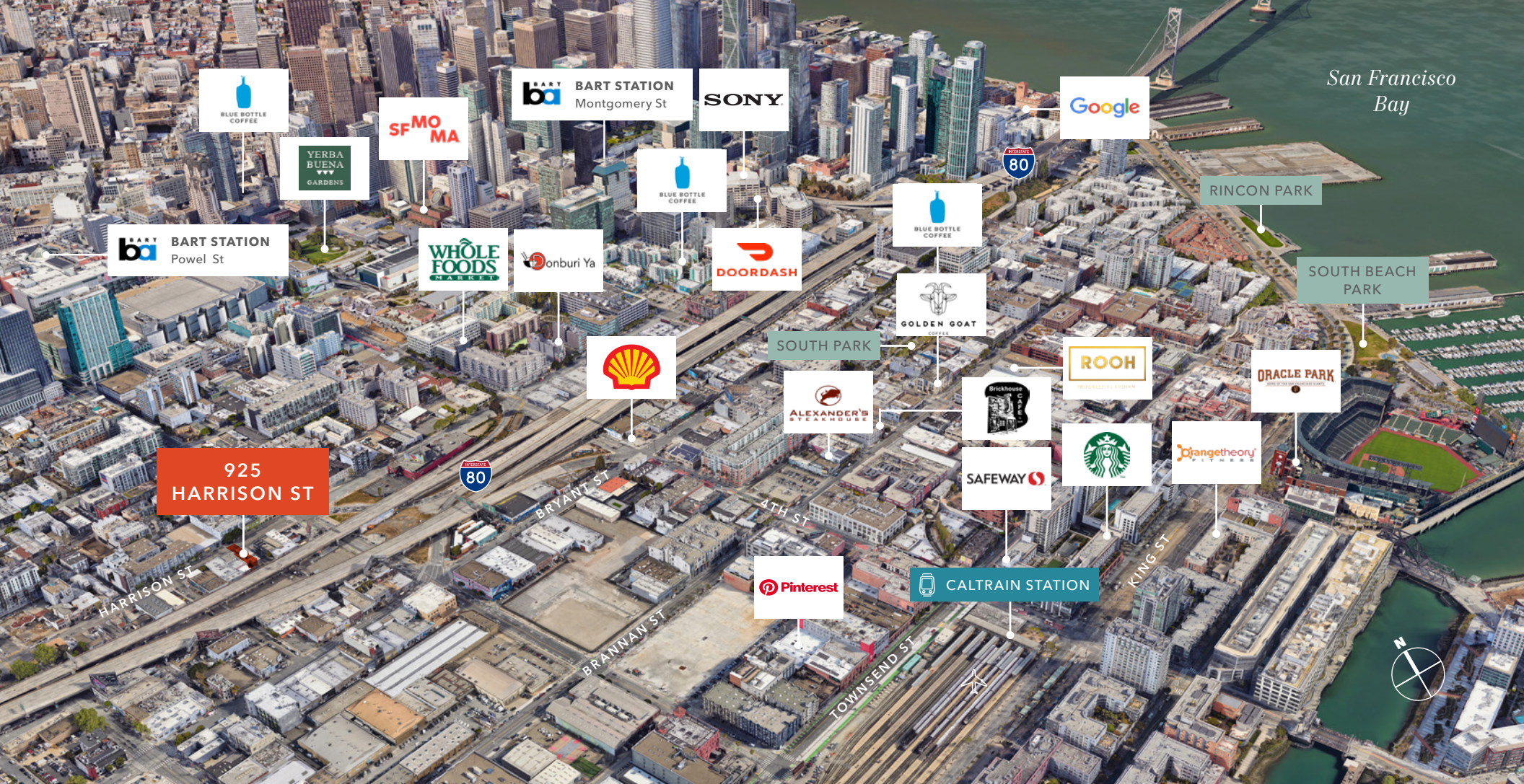
±1,550 SF
AVAILABLE



FLOOR PLAN NOT TO SCALE

SECOND FLOOR





925 HARRISON ST

For more information on this property, please contact

SCOTT VIX
 415.229.8924
 scott.vix@kiddier.com
 LIC N° 01407761

GARY COHEN
 415.229.8909
 gary.cohen@kiddier.com
 LIC N° 00831936

KIDDER.COM

This information supplied herein is from sources we deem reliable. It is provided without any representation, warranty, or guarantee, expressed or implied as to its accuracy. Prospective Buyer or Tenant should conduct an independent investigation and verification of all matters deemed to be material, including, but not limited to, statements of income and expenses. Consult your attorney, accountant, or other professional advisor.

